

Fast Charging Twin Charger

Dual Authenticating

T7

User Guide

Charging with the Pod Point Charge Card (RFID)



Dual Authenticating Twin Charger



This section of the user guide covers the Pod Point Twin Charger when charge is confirmed using RFID-authentication with the Pod Point Charge Card.

1. Understanding the charging-doors

The Twin Charger has two status lights on the lid, with one on each side (one light for Door A and one for Door B). These will initially be solid blue with pink flashes to show the Door is available for you to charge your vehicle.

The sockets are located on the left and right hand side of the unit - you will need to lift the covering flap to expose the socket.



2. Twin Charger lighting guide

The colour and flashing of the status lights on either side of the Twin unit show the current status of the corresponding door as follows:



Blue Light/Flashing Pink
Communicating



Green/Blue Flashing
Charging



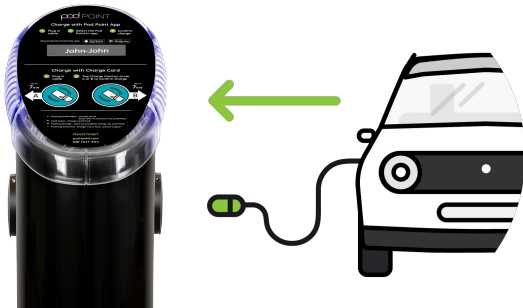
Solid Green
Charging (Confirmed)



Flashing Orange
Card not accepted



Flashing Red
Error



3-A. Connect your vehicle to start charging

Using your charging cable, connect your vehicle to one of the doors of the Twin Charger.

Charging will start immediately and the cable will be locked onto the car. The status lights for your door will start flashing alternating Blue & Green. Your vehicle will begin to charge for 15 min.

You will need to confirm your charge to continue charging after this period.

Note: Only certified mode 3 cables are to be used on the Twin Charger. In-cable adapters or converters are not permitted for use.

Dual Authenticating Twin Charger

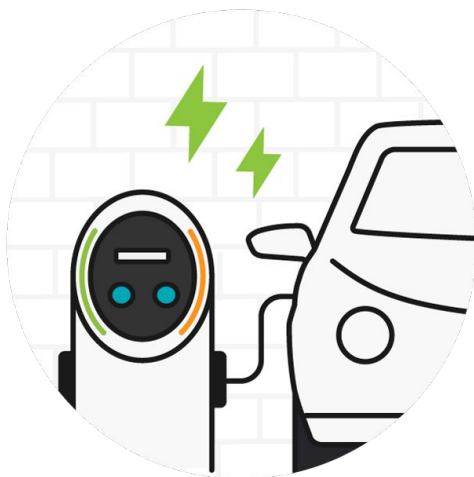
This section of the user guide covers the Pod Point Twin Charger when charge is confirmed using RFID-authentication with the Pod Point Charge Card.

3-B. Scan your charge card

There are two RFID sensor plates on top of the unit identified by the blue circles. One circle corresponds to Door A and the other to door B. Tap your charge card on the RFID sensor plate for the door you plugged your cable in to. When the unit detects your access card you should see a momentary blue and pink flash.



In order to continue charging after 15 minutes, you will need to confirm your charge.



4. Confirming your charge

If your charge card **has been accepted** the respective side of the Twin will turn a solid green and a confirmation beep will be heard, your charge has been confirmed.



If your charge card **has not been accepted**, the respective charging side of the charger will flash orange and an error beep will be heard.



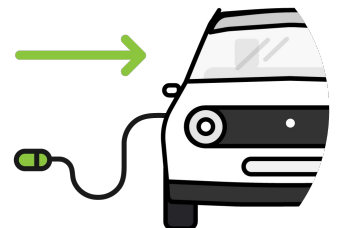
Note: If your card is not accepted, please try again or contact your account manager.

5. Ending your charge



Once your vehicle is fully charged the Twin Charger status light will be flashing green and the charge from the Twin Charger will stop automatically.

Alternatively if you would like to stop charging before your battery is full, simply unlock and remove the cable from your vehicle.



Charging with the Pod Point App



Dual Authenticating Twin Charger



This section of the user guide covers the Pod Point Twin Charger when charge is confirmed using the Pod Point App.

1. Download the Pod Point App



For iOS devices, download on the [App Store](#).



For Android devices, download on the [Google Playstore](#).

You can either create a Pod Point account in our app to use our network or alternatively, use guest access.

If payment is required to charge you will need to top-up the full amount onto your digital wallet or provide your card details.

If the chargers are configured as private, you'll need an account with the email address you signed up with to authenticate charging.

2. Understanding the charging-doors

The Twin Charger features two charging sockets protected by hinged doors.

These are named "Socket A & B" in the Pod Point App.

Both sockets are compatible with standard mode 3 charging cables and can be used to charge two vehicles simultaneously.



3. Twin Charger lighting guide

The colour and flashing of the status lights on either side of the Twin unit show the current status of the corresponding door as follows:



Blue Light/Flashing Pink
Communicating



Green/Blue Flashing
Charging



Solid Green
Charging (Confirmed)



Flashing Orange
Card not accepted



Flashing Red
Error

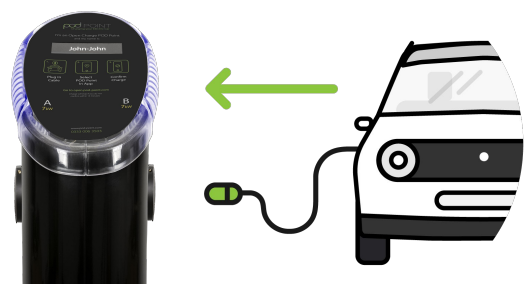
4. Connect your vehicle to start charging

Using your charging cable, connect your vehicle to the Twin Charger.

Charging will start immediately, the cable will be locked and a solid green light will be shown via the status light.

Note: If you do not confirm your charge using the Pod Point App within 15 minutes, charging will stop.

Note: Only certified mode 3 cables are to be used on the Twin Charger. In-cable adapters or converters are not permitted for use.



Dual Authenticating Twin Charger

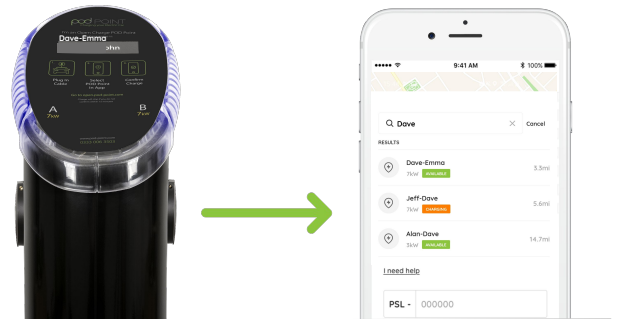
This section of the user guide covers the Pod Point Twin Charger when charge is confirmed using the Pod Point App.

5. Find your charger in-app

Use the name of your charger to locate it within the Pod Point App.

You can also search by the address or postcode of the chargepoint.

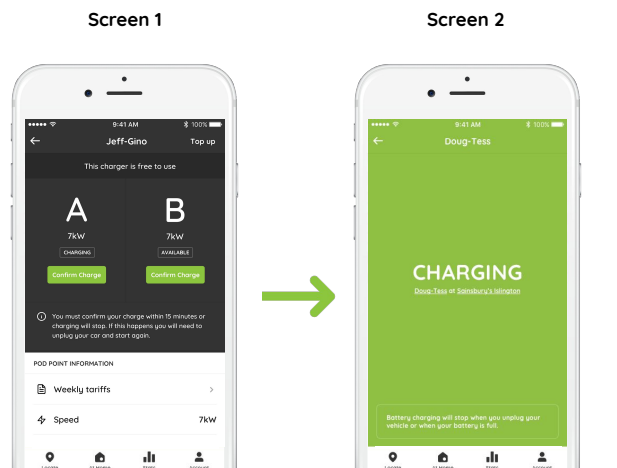
You can also find all of our chargers on the Pod Point Network online [here](#).



6. Confirming your charge

To use most of our Twin Chargers you will need to **confirm charge** within 15 minutes of your charging session starting via the Pod Point App. If your session is not confirmed then charging will stop.

To confirm your charge simply tap the “Confirm Charge” button in-app underneath the door you are charging from (see screen 1) you will then see screen 2 in-app to confirm you have started charging.



7. Ending your charge

- Once your vehicle is fully charged the Twin Charger status light will be flashing green and the charge from the Twin charger will stop automatically.

Alternatively if you would like to stop charging before your battery is full, simply unlock and remove the cable from your vehicle.





Call us for support on **020 7247 4114**



Email us at **support@pod-point.com**



Tweet us at **@Pod_Point**



Website: **pod-point.com**

pod POINT