

Fast Charging

Twin Charger

T3 | T7 | T11 | T22

Commercial User Guide

This user guide covers the standard Pod Point Twin Charger that is not RFID-authentication enabled and where charging is confirmed using the Pod Point App only.

## 1. Download the Pod Point App



For iOS devices, download on the [App Store](#).



For Android devices, download on the [Google Playstore](#).

You can either create a Pod Point account in our app to use our network or alternatively, use guest access.

If payment is required to charge you will need to top-up the full amount onto your digital wallet or provide your card details.

If the chargers are configured as private, you'll need an account with the same email address you signed up with to authenticate charging.

## 2. Understanding the charging-doors

The Twin Charger features two charging sockets protected by hinged doors.

These are named "Socket A and B" in the Pod Point App.

Both sockets are compatible with standard mode 3 charging cables and can be used to charge two vehicles simultaneously.



## 3. Twin Charger status light guide

The Twin features two lights on either side of the charger to inform the driver of the status of each charging socket they are connecting to.



**Blue with flashes of pink**  
Ready to charge



**Green**  
Charging



**Flashing Green**  
Finished charging



**Solid yellow**  
The Solo 3 has a schedule and it's currently outside the scheduled hours.



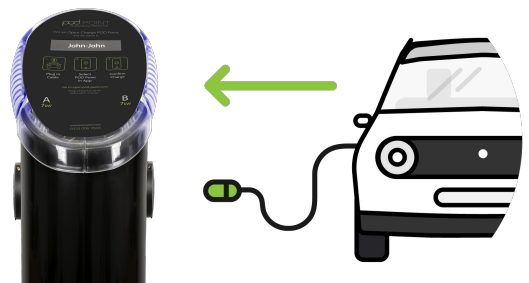
**Flashing Red**  
Error

## 4. Connect your vehicle to start charging

Using your charging cable, connect your vehicle to the Twin Charger.

Charging will start immediately, the cable will be locked and a solid green light will be shown via the status light.

**Note:** If you do not confirm your charge using the Pod Point App within 15 minutes, charging will stop.



**Note:** Only certified mode 3 cables are to be used on the Twin Charger. In-cable adapters or converters are not permitted for use.

# Twin Charger

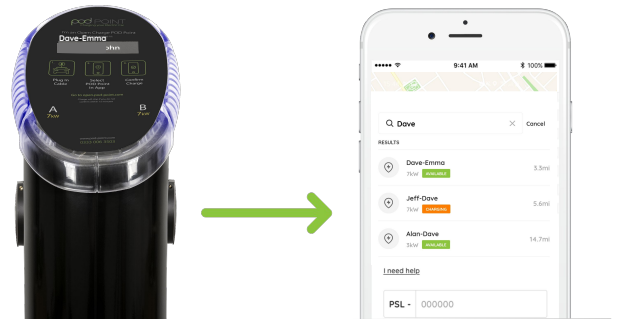
This user guide covers the standard Pod Point Twin Charger that is not RFID-authentication enabled and where charging is confirmed using the Pod Point App only.

## 5. Find your charger in-app

Use the name of your charger to locate it within the Pod Point App.

You can also search by the address or postcode of the chargepoint.

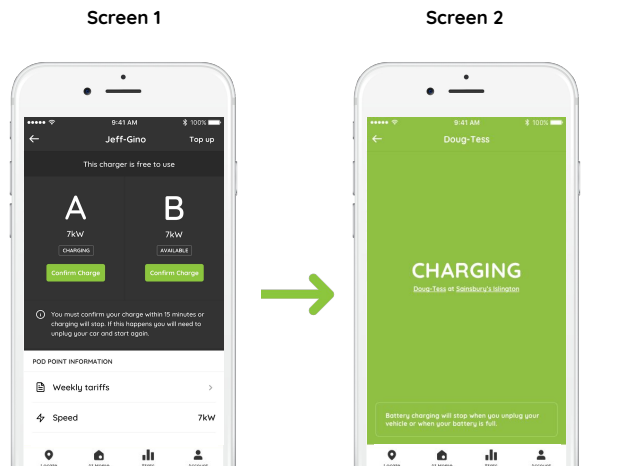
You can also find all of our chargers on the Pod Point Network online [here](#).




## 6. Confirming your charge

To use most of our Twin Chargers you will need to **confirm charge** within 15 minutes of your charging session starting via the Pod Point App. If your session is not confirmed then charging will stop.

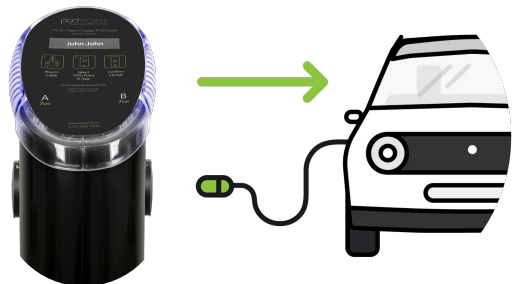
To confirm your charge simply tap the “Confirm Charge” button in-app underneath the door you are charging from (see screen 1). You will then see screen 2 in-app to confirm you have started charging.



## 7. Ending your charge

 Once your vehicle is fully charged the Twin Charger status light will be flashing green and the charge from the Twin Charger will stop automatically.

Alternatively if you would like to stop charging before your battery is full, simply unlock and remove the cable from your vehicle.





For support visit [help.pod-point.com](https://help.pod-point.com)



Tweet us at [@Pod\\_Point](https://twitter.com/Pod_Point)



Website: [pod-point.com](https://pod-point.com)

pod POINT